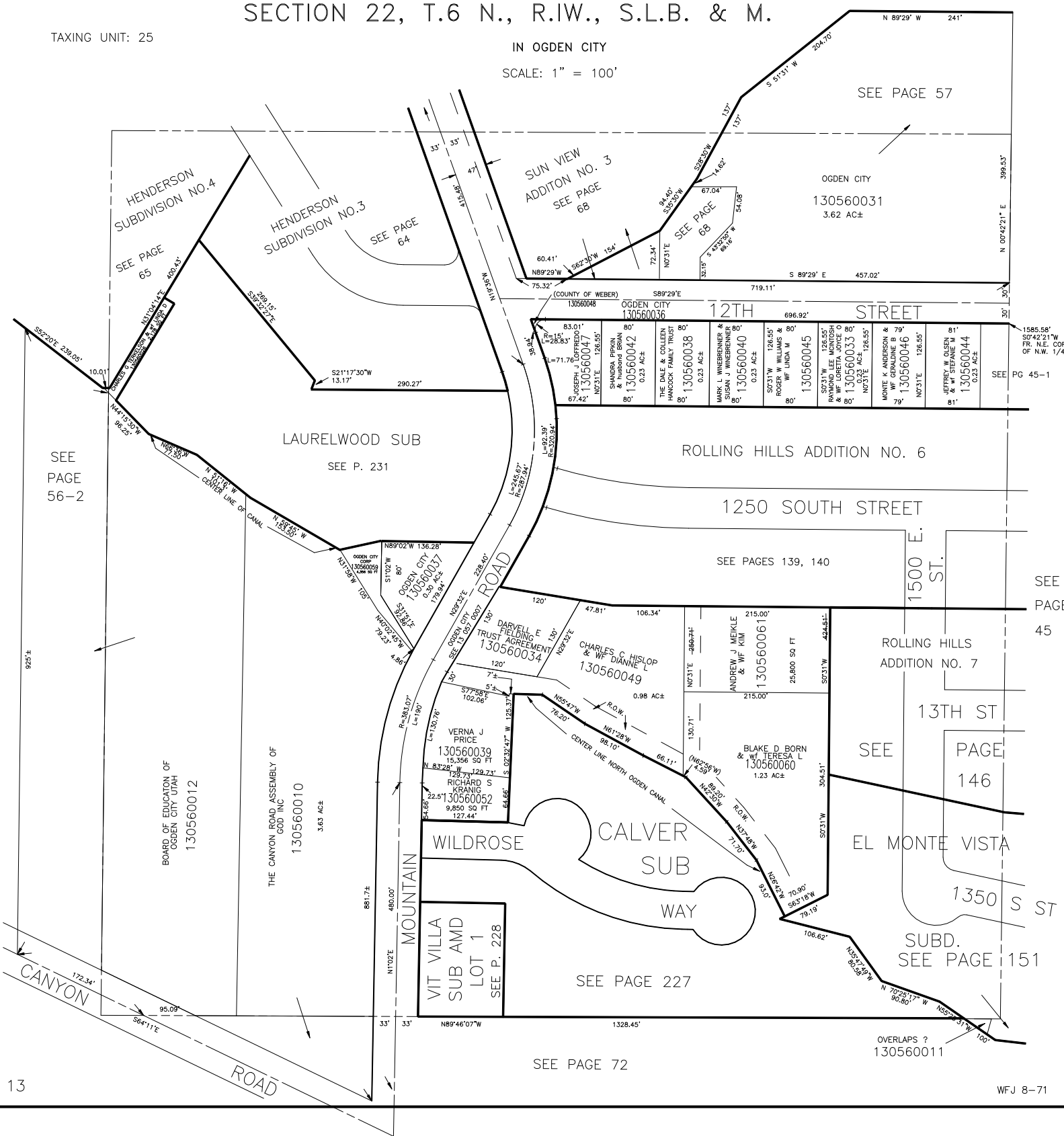


S.E. 1/4 OF N.W. 1/4
SECTION 22, T.6 N., R.1W., S.L.B. & M.

TAXING UNIT: 25

IN OGDEN CITY
SCALE: 1" = 100'



SEE PAGE 56-2

SEE PAGE 57

SEE PG 45-1

SEE PAGE 45

SEE PAGE 146

SEE PAGE 151

SEE PAGE 72